



## Torque & Asset Management

*Systèmes de Gestion de Couple  
et Gestion des Actifs*

*Messtechnik &  
Bestandsverwaltungssysteme*

*Systemas de Gestion de los Pares  
y de las Herramientas*

*Sistema Gestione della Coppia*

87



ETT calibration case  
Coffret de calibration ETT  
ETT-Kalibrierkoffer  
Maletines de calibración ETT  
Valigetta di calibratura ETT

88



ETW high-precision wrenches  
Clés haute précision ETW  
ETW-Präzisionsschraubenschlüssel  
Llaves de gran precisión ETW  
Chiavi di precisione ETW

90

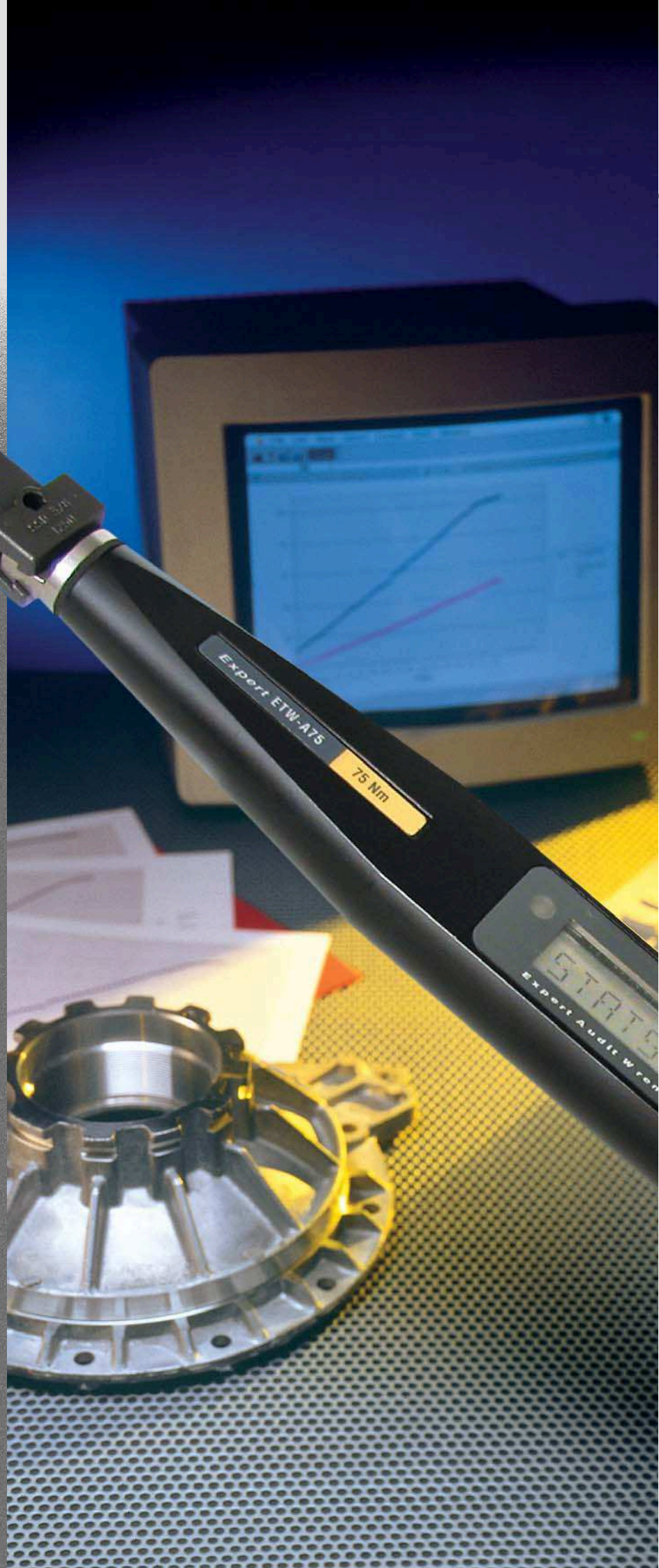


Torque and angle analysis devices  
Analyseurs de couple et d'angle  
Drehmoment- und Winkel-Analysegeräte  
Analizadores del par y del ángulo  
Strumenti di analisi - coppia e angolo

92



Asset Management System  
Système électronique de gestion de parc  
machines  
Bestandsverwaltungs-System  
Sistema de administración de equipos  
Sistema elettronico per la gestione del  
parco macchine



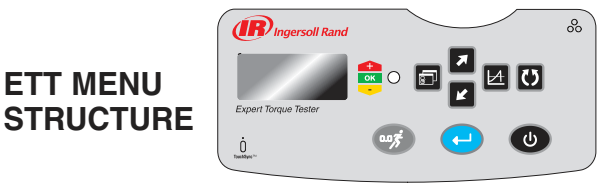


**ETT Series** **Standard Equipment**

- ETT torque analysis device
- Battery charger
- Joint simulator
- Allen wrench for disassembling the simulator
- Quick-assembly carrier plate
- Operation manual
- Calibration certificate



ETT-30



**Setup**

- Power Off : .....Turn the power off
- Units : .....Units of measure of torque value
- Threshold : .....Torque level at which to start measurement
- Minimum Torque : .....Lower Spec Limit (use track, peak, pulse button to set)
- Maximum Torque : .....Upper Spec Limit (use track, peak, pulse button to set)
- Click Thresh : .....Drops by this value before taking a measurement (Click mode)
- Cycle End Time : .....Time between when threshold is reached, and when measurement is concluded
- Frequency Response : .....Filters the torque movement by this amount (75 Hz to 6144 Hz)
- Clear Readings : .....Clears all previous readings

**Printer**

- Print Header : .....Print a header including Date, Time and Torque rating
- Auto Print On : .....Automatically sends Date, Time, reading and units to printer port
- Off : .....Readings are not sent to printer port

**Options**

- Time and Date .....Sets the time and date
- Date Format .....Formats date and time (dd:mm:yy or mm:dd:yy)
- Software Reset Confirm .....Resets the software to original settings
- Power Off Time .....Time at which the unit powers down automatically
- Backlight Time .....Time at which backlight turns off automatically
- Language .....Sets the desired language

**Diagnostics**

- S/W Release .....Version of software loaded on unit
- Span .....Full scale torque value
- Next Cal .....Date of next calibration requirement
- Test LEDs .....Tests the tri-color LEDs
- ADC Values .....Coded voltage levels pertaining to battery, transistor, etc.

Ref.	Min.	Max.	ACCURACY	kg	mm
ETT-1	Nm 0.1	Nm 1	FSD 0.5 %	2.7	213 x 238 x 70
ETT-4	Nm 0.4	Nm 4	FSD 0.5 %	2.7	213 x 238 x 70
ETT-12	Nm 1.2	Nm 12	FSD 0.5 %	2.7	213 x 238 x 70
ETT-30	Nm 3.0	Nm 30	FSD 0.5 %	2.7	213 x 238 x 70

**Accessories**  
Accessoires  
Zubehör  
Accesorios  
Accessori

Printer connecting cable Câble de connexion imprimante Drucker-Anschlusskabel Cable de conexión a la impresora Cavo di collegamento stampante	ETA2-P925
PC connecting cable Câble de connexion PC PC-Anschlusskabel Cable de conexión al PC Cavo di collegamento computer	ETA2-PC99





**High-Precision Wrenches for Fastening and Audit**  
**Clés Haute Précision pour Vissage et Audit**  
**Präzisionsschraubenschlüssel für Verschraubung und Audit**  
**Llaves de Gran Precisión Para Atornillar y Auditar**  
**Chiave di Precisione per Serraggio di Dadi e Audit**



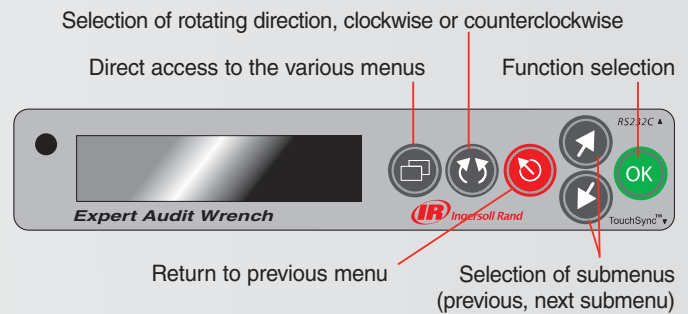
ETW-A75



**ETW-A Series** **Standard Equipment**

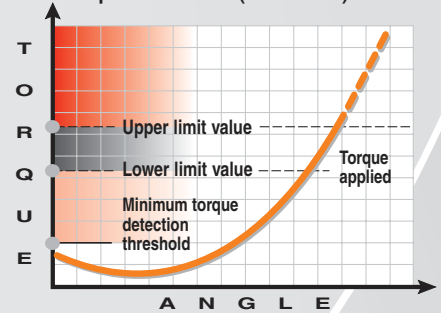
**FASTENING / TORQUE**  
**AUDIT / TORQUE**

- ETW-A wrench
- Shock-proof transport case
- Two 3.6 V batteries
- Operation and maintenance manual
- Calibration certificate

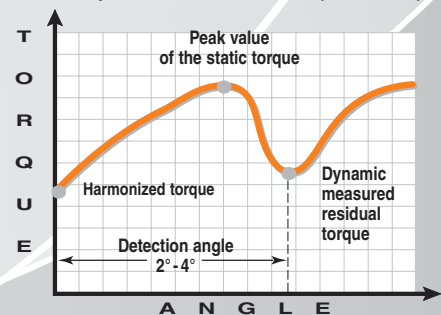


	ETW-A25	ETW-A75	ETW-A180
Torque Capacity (Nm)	25	75	180
Torque Range (Nm)	2.5-25	7.5-75	18-180
Torque Accuracy %	± 0.5 FS	± 0.5 FS	± 0.5 FS
Torque Overload Capacity (Nm)	30	90	225
Torque Modes	Normal: Peak / Track Instant: Dynamic Torque Audit		
Torque Units	Ncm - Nm Kgcm - Kgm ozin - lbin - lbft	Ncm - Nm Kgcm - Kgm lbin - lbft	Ncm - Nm Kgcm - Kgm lbin - lbft
Tightening Direction	CW/CCW	CW/CCW	CW/CCW
Audit Angle Range	1° - 20°	1° - 20°	1° - 20°
Angle Resolution	1°	1°	1°
Operating Temperature	5° - 40° Celsius ( 42° - 104° Fahrenheit)		
Temperature Stability	± 0.1% per °C		
Humidity	5% - 75% non-condensing		
Sealing	IP 40		
Square drive	1/4"	3/8"	1/2"
Weight	1Kg		
Length	510 mm		
Handle Diameter	38 mm		
Square Drive	1/4"	3/8"	1/2"
Power	2 'C' Cells 1.5V alkaline manganese (3 months life approx.) 2 'C' Cells 3.6V lithium chloride (6 months life approx.)		

**Torque Mode (normal)**



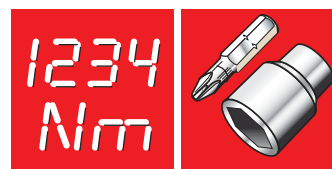
**Torque Audit Mode (instant)**



**Accessories**  
**Accessoires**  
**Zubehör**  
**Accesorios**  
**Accessori**

Printer connecting cable Câble de connexion imprimante Drucker-Anschlusskabel Cable de conexión a la impresora Cavo di collegamento stampante	<b>ETW-PR</b>
PC connecting cable Câble de connexion PC PC-Anschlusskabel Cable de conexión al PC Cavo di collegamento computer	<b>ETW-PC</b>

**High-Precision Wrenches for Fastening and Audit**  
**Clés Haute Précision pour Vissage et Audit**  
**Präzisionsschraubenschlüssel für Verschraubung und Audit**  
**Llaves de Gran Precisión Para Atornillar y Auditar**  
**Chiave di Precisione per Serraggio di Dadi e Audit**



ETW-E75

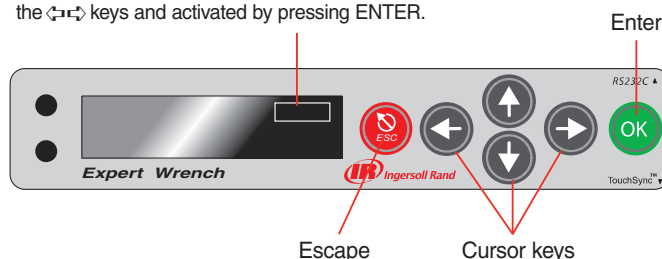
**ETW-E Series** **Standard Equipment**

**FASTENING / TORQUE**  
**FASTENING / ANGLE**  
**FASTENING / YIELD**

- ETW-E Expert electronic torque wrench
- Aluminum carry case
- Battery pack ref. ETW-EBP
- Battery charger ref. ETW-EBC and cable
- RS232 cable ref. ETW-EDB9 (for PC or printer)
- Operation and maintenance manual
- Calibration certificate



Note: Icons which appear here can be highlighted using the  $\leftarrow \rightarrow$  keys and activated by pressing ENTER.



	ETW-E25	ETW-E75	ETW-E180
Torque Capacity (Nm)	25	55	180
Torque Units	Nm, Ncm, lb-ft, Kgm, Kgcm		
Overload Capacity	125% max capacity of wrench		
Torque Accuracy	+ / - max 0.5% capacity of wrench		
Angle Range	0 – 3000°		
Tightening Direction	CW & CCW		
Operating Temperature Range	5° – 40° Celsius (41 – 104° Fahrenheit)		
Storage Temperature Range	0° – 50° Celsius (32 – 122° Fahrenheit )		
Temperature Stability	+ / - 0.1% per °C		
Humidity Range	5% – 75% non-condensing		
Sealing	IP54		
Square drive	1/4"	3/8"	1/2"
Weight	1 kg		
Length	512 mm		
Width	48 mm		
Depth	38 mm		
Power	2 "C" cells 1.5 V alkaline manganese (8 h of continuous use) or Rechargeable cell pack (typically 8 h of continuous use)		

**Accessories**  
**Accessoires**  
**Zubehör**  
**Accesorios**  
**Accessori**

PC Software Logiciel pour PC PC Programm Programa de computadora Software per PC	<b>ETW-CONNECT</b>
Ratchet head Tête à cliquet Ratschenkopf Cabezal de carraca Testa a cricchetto	1/4" : <b>ETW-E25-R04</b> 3/8" : <b>ETW-E75-R06</b> 1/2" : <b>ETW-E180-R08</b>



**Torque and Angle Analysis Devices**  
**Analyseurs de Couple et d'Angle**  
**Drehmoment- und Winkel-Analysegeräte**  
**Analizadores del Par y del Ángulo**  
**Strumenti di Analisi della Coppia e dell'Angolo**

**ETA Series**



ETA2-STRAP	Camera-Type Neck Strap
ETA2-BC	Battery Charger
ETA2-P525	Port Saver
ETA2-PC99	PC Connector Cable
ETA2-P925	Printer Cable
ETA2-CASE	Carrying Case
7464 or 7529	Operating Manual - Calibration Certificate

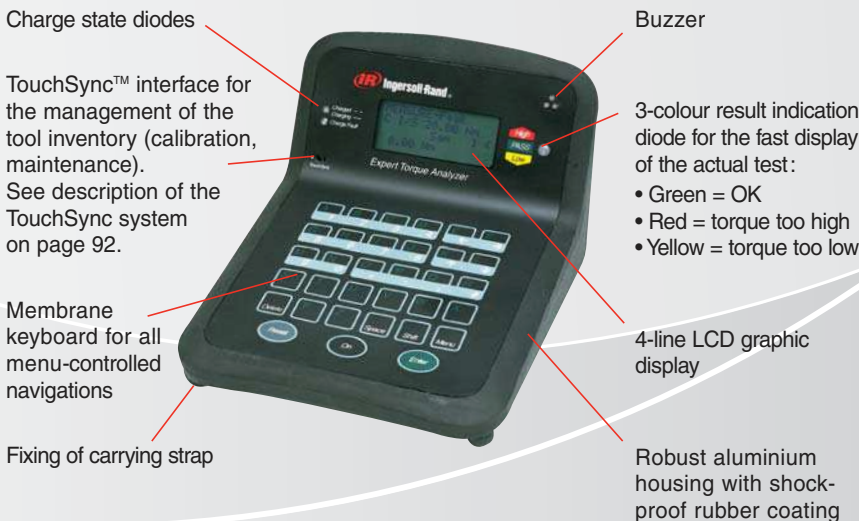


ETA2

ETA Features	ETA2 model	ETA5 model
Torque, angle and pulse measurement	•	•
Torque peak value, trace, pulse and trigger mode	•	•
Statistics module (Cp / Cpk, Cm / Cmk, CAM...)	•	•
Memory for the last 200 screw connections	•	—
Memory for the last 20,000 screw connections	—	•
9 torque dimension units	•	•
6 languages (Engl, French, Germ. Ital. Span. Swed.)	•	•
Status indicating diode (red, green and yellow)	•	•
Date and time management	•	•
Direct PC or printer port	•	•
Password protection	•	•
Accumulator with long operating time (up to 8 hours)	•	•
Quick charging device (2h30 for complete charging)	•	•
Automatic programmable hold	•	•
Storage of 250 strategies	—	•
Storage of 25 fastening cycles	—	•
Detection via bar code reader	—	•

\* Associated torque transducers shown on following page.  
 \* Capteurs de couple associés présentés en page suivante.  
 \* Dazugehörige Messwertaufnehmer auf der nächsten Seite.  
 \* Transductores de par asociados en la página siguiente.  
 \* Riferito ai Trasduttori di coppia indicati nelle pagine seguenti.

**FRONT VIEW**



**REAR VIEW**





- 1** The **Industry Standard** transducers will work with the ETA Series Analysers and other equipment that utilizes industry standard transducers.
- 2** The ETA **"Smart" Series** transducers are specifically designed to work with the ETA Analysers. The ETA2 or ETA5 Analyser will automatically identify the transducer's range and calibration through data stored on their "Smart" chip.
- 3** The ETA **"Smart" Series** Transducers are also available to measure torque and angle of rotation.

**Rotary transducers**  
**Capteurs de couple rotatifs**  
**Rotations-Drehmoment-Meßwertaufnehmer**  
**Transductores de par rotativos**  
**Trasduttori di coppia rotanti**



		<b>1</b> Ref. no. Industry Standard	<b>2</b> Ref. no. "Smart Series"	<b>3</b> Ref. no. "Smart Series"
1/4"	0.2 - 2	TR2H4 (1)	—	—
1/4"	0.5 - 5	TR5H4 (1)	TRD5H4	TRDA5H4
1/4"	2.0 - 20	TR20H4 (1)	TRD20H4	TRDA20H4
1/4"	2.0 - 20	TR20S4 (1)	TRD20S4	TRDA20S4
3/8"	7.5 - 75	TR75S6 (1)	TRD75S6	TRDA75S6
1/2"	18 - 180	TR180S8 (1)	TRD180S8	TRDA180S8
3/4"	25 - 250	TR250S12 (1)	—	—
3/4"	50 - 500	TR500S12 (1)	TRD500S12	TRDA500S12

● Overload Capacity: 125% of Rated Max Capacity — Stated Accuracy: 0.3% — Zero Offset Stability: 0.1% of Capacity per C — Operating Temperature: -10 / +40° C — Angle Resolution: 0.5°

(1) Requires cable, ref. No. **ETA2-TC** for connection to ETA Analysers

**Stationary transducers**  
**Capteurs de couple statiques**  
**Statische-Drehmoment-Meßwertaufnehmer**  
**Transductores de par estáticos**  
**Trasduttori di coppia statici**

		<b>1</b> Ref. no. Industry Standard	<b>2</b> Ref. no. "Smart Series"
1/4"	2.8 - 28	TS28S4 (1)	TSD28S4
3/8"	13.5 - 135	TS135S6 (1)	TSD135S6
1/2"	27.1 - 271	TS271S8 (1)	TSD271S8
3/4"	101.7 - 1017	TS1017S12 (1)	TSD1017S12

(1) Requires cable, ref. No. **ETA2-TC** for connection to ETA Analysers

**Joint simulator**  
**Simulateur de joint**  
**Verschraubungssimulator**  
**Simulador de unión atornillada**  
**Simulatore dei punti di collegamento**



**Stationary transducer with joint simulator**  
**Ensemble capteur statique/simulateur de joint**

**Kombinierte Messwertgeber-/Verschraubungssimulatoreinheit**

**Unidad de sonda estática/simulador de unión atornillada**

**Sonda di misura fissa/Simulatore dei punti di collegamento**

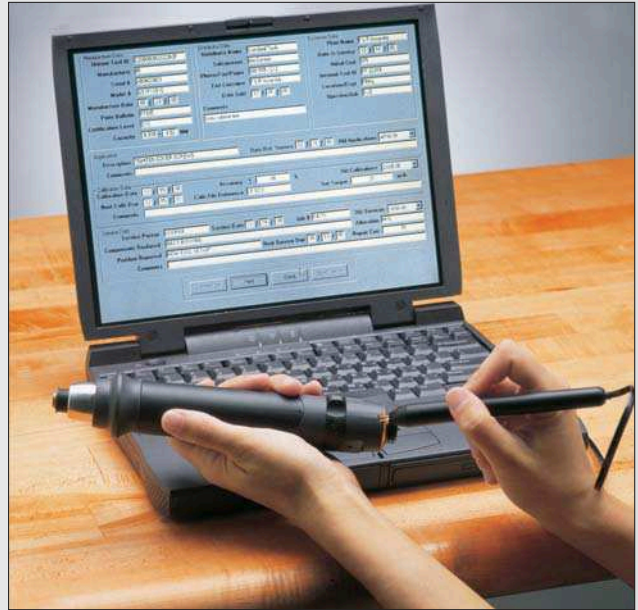


		Ref.
<b>FOR ROTARY TRANSDUCERS</b>		
1/4"	20	JKR20
3/8"	75	JKR75
1/2"	180	JKR180
3/4"	500	JKR500
<b>FOR STATIONARY TRANSDUCERS</b>		
1/4"	30	JKS30
3/8"	150	JKS150
1/2"	300	JKS300
3/4"	1000	JKS1000

		<b>1</b> Ref. no. Industry Standard
1/4"	2.8 - 28	JKST28 (1)
3/8"	13.5 - 135	JKST135 (1)
1/2"	27.1 - 271	JKST271 (1)
3/4"	101.7 - 1017	JKST1017 (1)

(1) Requires cable, ref. No. **ETA2-TC** for connection to ETA Analysers

**TouchSync™**



TouchSync™ Asset Management System, ref. no. **AMSKIT-250**

Système électronique de gestion de parc machines TouchSync™ ref. **AMSKIT-250**

TouchSync Bestandsverwaltungs-System, Ref.-Nr. **AMSKIT-250**

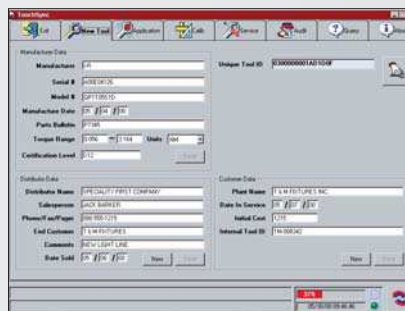
Sistema de administración de equipos TouchSync™ ref. **AMSKIT-250**

Sistema elettronico per la gestione del parco macchine TouchSync Asset Management System, rif. **AMSKIT-250**



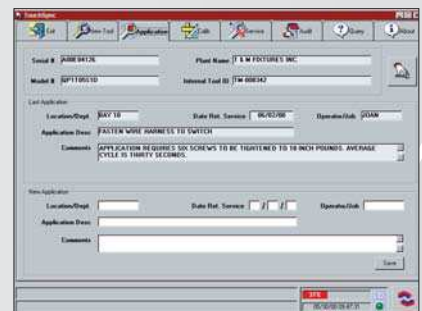
**1 About**

Displays the initial screen for the purpose of selecting language (English, Spanish, French, German, or Italian), the date format, the serial communications and the adapter style.



**2 New Tool**

Manufacturer's Data: programmed at time of production for Q2 tools and other IR equipped products – or by first user for other retrofit products. Supplier Data, and Customer Data, involving information to be entered before the tool or asset is placed into use. While the Distributor and Customer data are changeable, the Manufacturer data is a permanent record.



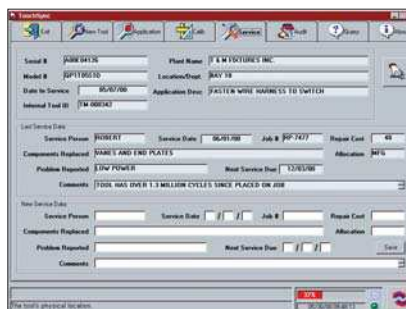
**3 Application**

Allows the user to enter location and operator data into the tool or asset, as well as the database, with space for description and comments.



#### 4 Calibration

Provides fields for entering calibration parameters, references, and comments, while displaying "old calibration" data.



#### 5 Service

This function allows the user to add service data, covering a wide range of details, along with display of "last service" data.



#### 6 Audit

Enables user to perform a quick status check of the most recent information stored on the tool. Helpful for checking tool for correct location and application. Calibration and service dates that are past due will be displayed in red.

#### 7 Query

This feature allows the user to construct and perform a database search, based on a logical selection of parameters with up to three levels of criteria. Once the tools or assets with the specified criteria have been found, reports may be printed. Example: Find all tools with a calibration date between 5/05/02 and 5/03/03.

## TouchSync™

Retrofit kits for connection to the TouchSync system: (fitted as standard on all Q2 Series) – Connection to the tool air supply.

Kits de connexion pour le système TouchSync: (fourni en standard avec tous les modèles Q2). Connexion sur l'entrée d'air des machines.

Chip-Nachrüstsatz für die Verwendung mit TouchSync: (Standard bei allen Werkzeugen der Q2-Baureihe), zum Einschrauben in den Lufteinlass des Werkzeugs.

Kits de adaptación para el sistema TouchSync (equipo estándar en todas las series Q2). Conexión por la entrada de aire de la herramienta.

Kits per connessione con il sistema TouchSync: (fornito standard su tutti i modelli Q2) - Connessione sull'ingresso aria.



Ref. No.	
<b>NPT</b>	
AMS-4 NPT	1/4" NPT
AMS-6 NPT	3/8" NPT
AMS-8 NPT	1/2" NPT
AMS-12 NPT	3/4" NPT
<b>BSP</b>	
AMS-4 BSPT	1/4" BSP
AMS-6 BSPT	3/8" BSP
AMS-8 BSPT	1/2" BSP
AMS-12 BSPT	3/4" BSP